

MEDICARE FEE-FOR-SERVICE (FFS) HOSPITAL READMISSIONS: QUARTER 4 (Q4) 2012 – Q3 2013

STATE OF CALIFORNIA

Executive Summary

The Centers for Medicare & Medicaid Services (CMS) has tasked Health Services Advisory Group of California, Inc. (HSAG of California), with assisting communities, hospitals, and post-acute providers with improving the quality of care for Medicare beneficiaries who transition among care settings. This document provides information regarding the state of California's all-cause, acute myocardial infarction (AMI), heart failure (HF), pneumonia (PNE), chronic obstructive pulmonary disease (COPD), and total hip/knee replacement (THA/TKA) 30-day readmissions. Readmission results are limited to Medicare FFS Part-A data for discharges from October 1, 2012, through September 30, 2013.¹ Readmissions were identified from October 1, 2012, through October 30, 2013. Readmission rates in this report are not calculated using the 30-day risk standardized methodology for the CMS Hospital Readmission Reduction Program or on hospitalcompare.hhs.gov.

Data are broken out into seven different sections:

- ◆ All-Cause Readmission Rates
- ◆ AMI Readmission Rates
- ◆ HF Readmission Rates
- ◆ PNE Readmission Rates
- ◆ COPD Readmission Rates
- ◆ THA/TKA Readmission Rates
- ◆ Emergency Department (ED) Visits and Observation Stays

Details for All-Cause Readmissions:

All-cause readmission rates are calculated as the percentage of hospital admissions that occurred within 30 days of an index admission for any condition. Each hospital admission within 30 days following an index admission is considered a readmission (e.g., a beneficiary with four readmissions in the measurement period counts as four separate readmissions). Any beneficiary who dies in the hospital is excluded from the calculation.

Details for Condition-Specific Readmissions:

When calculating disease-specific readmission rates, an admission is included if the principal diagnosis code for the admission specifies that disease (i.e., AMI, HF, PNE, COPD, and THA/TKA readmission rates). Condition-specific readmissions include all-cause admissions that occur within 30 days of an index admission for the specific condition (e.g., a beneficiary with an index admission of AMI and is readmitted for a urinary tract infection [UTI] is considered an AMI readmission). Any beneficiary who dies in the hospital is excluded from the calculation.

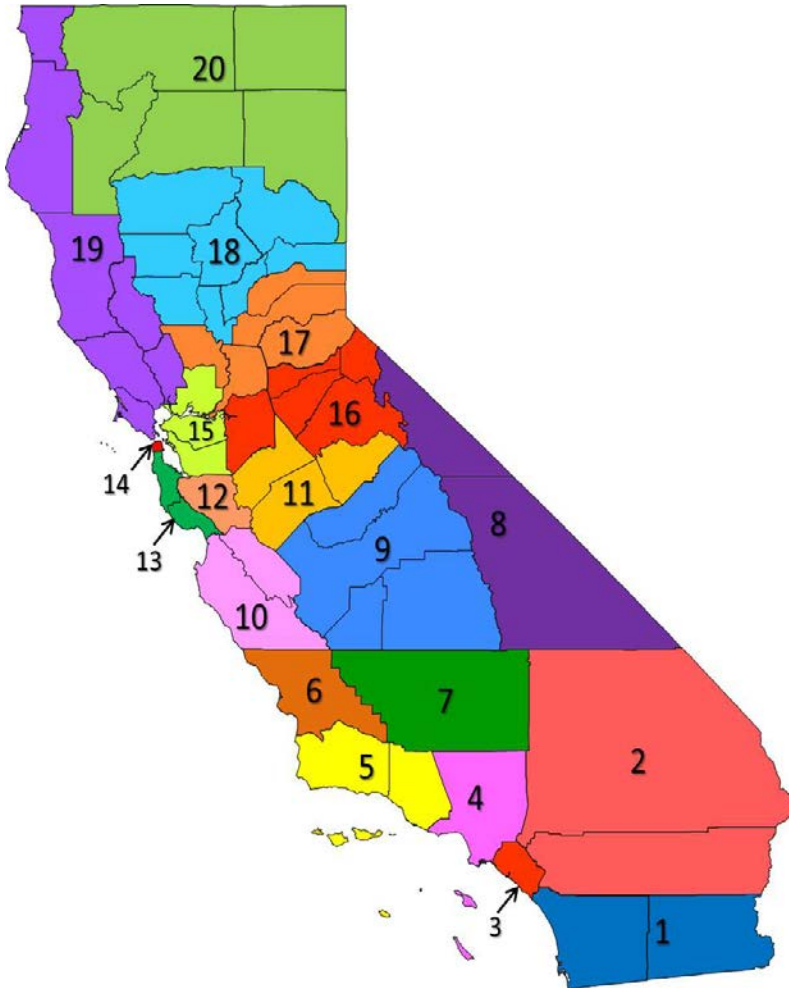
For questions on the results, please contact Chad Vargas at 818-265-4688, cvargas@hsag.com or Michelle Pastrano at 818-265-4648, mpastrano@hsag.com.

¹ The ASAT data file was used for this analysis. The ASAT data file is provided to HSAG by CMS. The ASAT data file includes Part-A claims for Fee-for-Service (FFS) beneficiaries.

Region-Level Map

The figure below displays the location of each region in the state of California. The table below displays the average readmission rate for each region from the best rate to the worst rate. In addition, a crosswalk of the counties located in each region has been provided.

Region	Avg Rate
8	7.8%
6	13.3%
19	14.0%
20	14.3%
10	15.0%
13	15.1%
5	15.7%
17	16.6%
16	17.0%
12	17.4%
3	17.7%
1	17.8%
15	18.0%
9	18.3%
11	18.5%
2	18.6%
18	18.8%
14	18.9%
4	20.9%
7	21.0%



Region and County Crosswalk	
Region	Counties
Region 1	San Diego/Imperial
Region 2	Riverside/San Bernardino
Region 3	Orange
Region 4	Los Angeles/Antelope Valley
Region 5	Santa Barbara/Ventura
Region 6	San Luis Obispo
Region 7	Kern
Region 8	Inyo/Mono
Region 9	Madera/Fresno/Kings/Tulare
Region 10	Monterey/San Benito
Region 11	Stanislaus/Merced/Mariposa
Region 12	Santa Clara
Region 13	San Mateo/Santa Cruz
Region 14	San Francisco
Region 15	Solano/Contra Costa/Alameda
Region 16	San Joaquin/Amador/Calaveras/Tuolumne/Alpine
Region 17	Yolo/Sacramento/Nevada/Placer/El Dorado
Region 18	Sutter/Yuba/Sierra/Plumas/Tehama/Glenn/Colusa/Butte
Region 19	Marin/Napa/Sonoma/Lake/Mendocino/Humboldt/Del Norte
Region 20	Siskiyou/Modoc/Trinity/Shasta/Lassen

All-Cause Readmission Rates

Table 1 depicts the all-cause 30-day readmission rates by discharge setting for Q4 2012 through Q3 2013 for the state of California.

Group	Setting Discharged To	Number of Discharges	Number of Discharges Readmitted within 30 Days	30-Day Readmit Rate	Number of 30-Day Readmits to the same hospital	Percentage of 30-Day Readmits to the same hospital	Number of 30-Day Readmits to another hospital	Percentage of 30-Day Readmits to another hospital
California	Home	368,292	63,098	17.1%	46,036	73.0%	17,062	27.0%
	SNF	171,396	35,993	21.0%	26,116	72.6%	9,877	27.4%
	HHA	125,239	24,458	19.5%	19,201	78.5%	5,257	21.5%
	Hospice	16,245	538	3.3%	362	67.3%	176	32.7%
	Other	54,508	11,045	20.3%	6,423	58.2%	4,622	41.8%
	All		735,680	135,132	18.4%	98,138	72.6%	36,994

Table 2 depicts the number of days from discharge to readmission for each discharge setting for the state of California.

Group	Setting Discharged To	Number of Readmissions	1–3 Days		4–7 Days		8–14 Days		15–21 Days		22–30 Days	
			N	%	N	%	N	%	N	%	N	%
California	Home	63,098	10,813	17.1%	12,043	19.1%	15,713	24.9%	12,336	19.6%	12,193	19.3%
	SNF	35,993	5,036	14.0%	6,598	18.3%	9,372	26.0%	7,390	20.5%	7,597	21.1%
	HHA	24,458	4,084	16.7%	4,878	19.9%	6,268	25.6%	4,641	19.0%	4,587	18.8%
	Hospice	538	125	23.2%	115	21.4%	116	21.6%	104	19.3%	78	14.5%
	Other	11,045	2,483	22.5%	1,780	16.1%	2,374	21.5%	2,041	18.5%	2,367	21.4%
	All		135,132	22,541	16.7%	25,414	18.8%	33,843	25.0%	26,512	19.6%	26,822

Table 3 provides a comparison of the age breakouts for those cases that were readmitted for all causes versus those that were not readmitted for the state of California.²

Table 3: Age Breakout by Readmission Category—October 1, 2012–September 30, 2013						
Age	Readmitted Cases		Non-Readmitted Cases		Total Discharges	% of Total Discharges Readmitted
	N	%	N	%	N	%
<18	34	0.0%	84	0.0%	118	28.8%
18–24	447	0.3%	1,318	0.2%	1,765	25.3%
25–34	3,052	2.3%	7,941	1.3%	10,993	27.8%
35–44	5,360	4.0%	14,285	2.4%	19,645	27.3%
45–54	11,251	8.3%	34,533	5.8%	45,784	24.6%
55–64	16,907	12.5%	59,616	9.9%	76,523	22.1%
65–74	36,389	26.9%	184,706	30.8%	221,095	16.5%
75–84	35,378	26.2%	168,918	28.1%	204,296	17.3%
85+	26,314	19.5%	129,147	21.5%	155,461	16.9%
Total	135,132	100.0%	600,548	100.0%	735,680	18.4%

Table 4 provides a comparison of the all-cause 30-day readmission rates by gender for Q4 2012 through Q3 2013 for the state of California.

Table 4: Gender Breakout by Readmission Category—October 1, 2012–September 30, 2013						
Gender	Readmitted Cases		Non-Readmitted Cases		Total Discharges	% of Total Discharges Readmitted
	N	%	N	%	N	%
Female	67,901	50.2%	326,000	54.3%	393,901	17.2%
Male	67,230	49.8%	274,545	45.7%	341,775	19.7%
Total	135,131	100.0%	600,545	100.0%	735,676	18.4%

² The counts in the following tables may not equal the total readmission and discharge counts, due to the receipt of incomplete data in some claims.

Table 5 depicts the all-cause 30-day readmission rates by race for Q4 2012 through Q3 2013 for the state of California.^{3,4}

Table 5: All-Cause 30-Day Readmission Rates by Race/Ethnicity—October 1, 2012–September 30, 2013						
Race	Readmitted Cases		Non-Readmitted Cases		Total Discharges	% of Total Discharges Readmitted
Categories	N	%	N	%	N	%
White	91,763	67.9%	437,278	72.8%	529,041	17.3%
Black	15,826	11.7%	50,214	8.4%	66,040	24.0%
Asian	9,555	7.1%	41,135	6.8%	50,690	18.8%
Hispanic	11,748	8.7%	44,286	7.4%	56,034	21.0%
Native American	862	0.6%	3,421	0.6%	4,283	20.1%
Other	5,378	4.0%	24,214	4.0%	29,592	18.2%
Total	135,132	100.0%	600,548	100.0%	735,680	18.4%

Table 6 depicts the all-cause 30-day readmission rates by discharge setting year for calendar year (CY) 2010 (i.e., baseline period), CY 2011, and CY 2012 for the state of California.

Table 6: All-Cause 30-Day Readmission Rates by Year—October 1, 2012–September 30, 2013								
Group	Setting Discharged To	Number of Discharges	Number of Discharges Readmitted within 30 Days	30-Day Readmit Rate	Number of 30-Day Readmits to the same hospital	Percentage of 30-Day Readmits to the same hospital	Number of 30-Day Readmits to another hospital	Percentage of 30-Day Readmits to another hospital
California CY 2010	Home	410,034	72,479	17.7%	53,325	73.6%	19,154	26.4%
	SNF	172,447	39,480	22.9%	29,288	74.2%	10,192	25.8%
	HHA	120,117	24,965	20.8%	19,561	78.4%	5,404	21.6%
	Hospice	14,269	551	3.9%	385	69.9%	166	30.1%
	Other	51,240	10,869	21.2%	6,380	58.7%	4,489	41.3%
	All	768,107	148,344	19.3%	108,939	73.4%	39,405	26.6%
California CY 2011	Home	402,804	70,524	17.5%	51,831	73.5%	18,693	26.5%
	SNF	175,361	40,524	23.1%	29,889	73.8%	10,635	26.2%
	HHA	120,829	25,000	20.7%	19,538	78.2%	5,462	21.8%
	Hospice	15,809	589	3.7%	373	63.3%	216	36.7%
	Other	53,248	11,113	20.9%	6,633	59.7%	4,480	40.3%
	All	768,051	147,750	19.2%	108,264	73.3%	39,486	26.7%
California CY 2012	Home	389,236	67,660	17.4%	49,625	73.3%	18,035	26.7%
	SNF	173,939	38,585	22.2%	28,094	72.8%	10,491	27.2%
	HHA	123,159	24,950	20.3%	19,477	78.1%	5,473	21.9%
	Hospice	16,349	571	3.5%	360	63.0%	211	37.0%
	Other	53,577	10,847	20.2%	6,399	59.0%	4,448	41.0%
	All	756,260	142,613	18.9%	103,955	72.9%	38,658	27.1%

³ Caution should be exercised when evaluating readmission rates for races with a low number of discharges/readmissions.

⁴ The counts in the Race/Ethnicity table may not equal the total readmission and discharge counts, due to the receipt of incomplete data in some claims.

Figure 1 displays the all-cause 30-day readmission rates for home, skilled nursing facility (SNF), home health agency (HHA), hospice, other, and all settings for CY 2010 (i.e., baseline period), CY 2011, and CY 2012 for the state of California.

Figure 1: 30-Day Readmission Rates by Discharge Setting

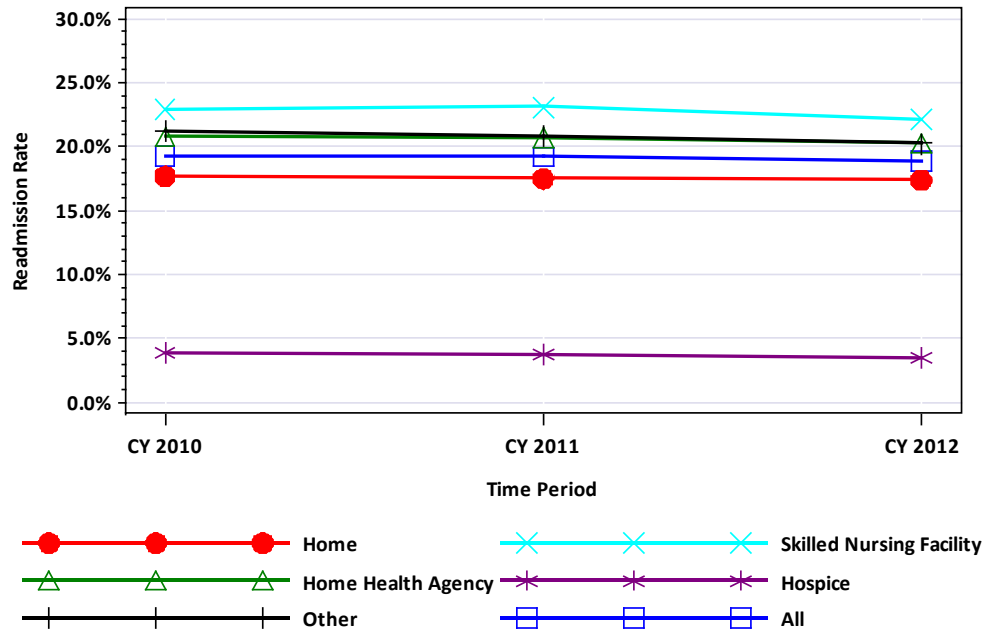


Table 7 depicts the all-cause 30-day readmissions and admissions per 1,000 beneficiaries for CY 2010 (i.e., baseline period), CY 2011, and CY 2012 for the state of California.

Group	FFS Beneficiaries	All-Cause Readmissions	Readmissions per 1,000 Beneficiaries	All-Cause Admissions	Admissions per 1,000 Beneficiaries
California CY 2010	3,066,650	148,344	48.4	768,107	250.5
California CY 2011	3,130,740	147,750	47.2	768,051	245.3
California CY 2012	3,246,270	142,613	43.9	756,260	233.0

Table 8 depicts the all-cause 30-day readmission rates for patients discharged to home for Q4 2012 through Q3 2013 for the state of California.

Table 8: All-Cause 30-Day Readmission Rates by Quarter for Patients Discharged to Home— October 1, 2012–September 30, 2013								
Setting Discharged To	Quarter	Number of Discharges	Number of Discharges Readmitted within 30 Days	30-Day Readmit Rate	Number of 30-Day Readmits to the same hospital	Percentage of 30-Day Readmits to the same hospital	Number of 30-Day Readmits to another hospital	Percentage of 30-Day Readmits to another hospital
Home	Q4 2012	93,473	16,327	17.5%	11,995	73.5%	4,332	26.5%
	Q1 2013	97,919	16,953	17.3%	12,321	72.7%	4,632	27.3%
	Q2 2013	90,371	15,303	16.9%	11,110	72.6%	4,193	27.4%
	Q3 2013	86,529	14,515	16.8%	10,610	73.1%	3,905	26.9%
	All	368,292	63,098	17.1%	46,036	73.0%	17,062	27.0%

Figure 2 displays the all-cause 30-day readmission rates for patients discharged to home for Q4 2012 through Q3 2013 for the state of California. The readmission rate for each quarter is displayed above the bar.

Figure 2: Readmission Rate by Quarter for Patients Discharged to Home

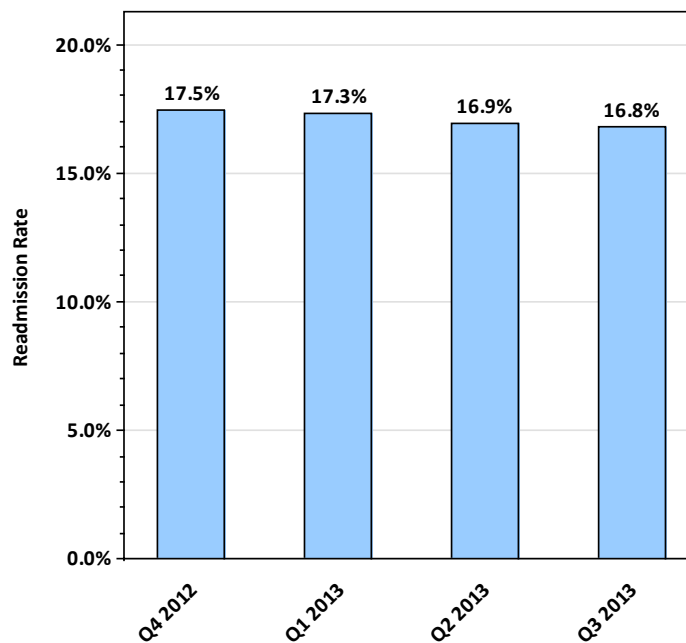


Table 9 depicts the all-cause 30-day readmission rates for patients discharged to home for each month in Q4 2012 through Q3 2013 for the state of California.

Table 9: All-Cause 30-Day Readmission Rates by Month for Patients Discharged to Home— October 1, 2012–September 30, 2013								
Setting Discharged To	Month	Number of Discharges	Number of Discharges Readmitted within 30 Days	30-Day Readmit Rate	Number of 30-Day Readmits to the same hospital	Percentage of 30-Day Readmits to the same hospital	Number of 30-Day Readmits to another hospital	Percentage of 30-Day Readmits to another hospital
Home	October 2012	31,394	5,523	17.6%	4,048	73.3%	1,475	26.7%
	November 2012	30,696	5,251	17.1%	3,857	73.5%	1,394	26.5%
	December 2012	31,383	5,553	17.7%	4,090	73.7%	1,463	26.3%
	January 2013	34,080	6,001	17.6%	4,302	71.7%	1,699	28.3%
	February 2013	31,038	5,336	17.2%	3,875	72.6%	1,461	27.4%
	March 2013	32,801	5,616	17.1%	4,144	73.8%	1,472	26.2%
	April 2013	30,332	5,203	17.2%	3,783	72.7%	1,420	27.3%
	May 2013	30,822	5,158	16.7%	3,730	72.3%	1,428	27.7%
	June 2013	29,217	4,942	16.9%	3,597	72.8%	1,345	27.2%
	July 2013	29,433	4,983	16.9%	3,654	73.3%	1,329	26.7%
	August 2013	29,652	5,044	17.0%	3,681	73.0%	1,363	27.0%
	September 2013	27,444	4,488	16.4%	3,275	73.0%	1,213	27.0%
	All		368,292	63,098	17.1%	46,036	73.0%	17,062

Figure 3 displays the all-cause 30-day readmission rates for patients discharged to home for each month in Q4 2012 through Q3 2013 for the state of California. The readmission rate for each month is displayed above the bar.

Figure 3: Readmission Rate by Month for Patients Discharged to Home

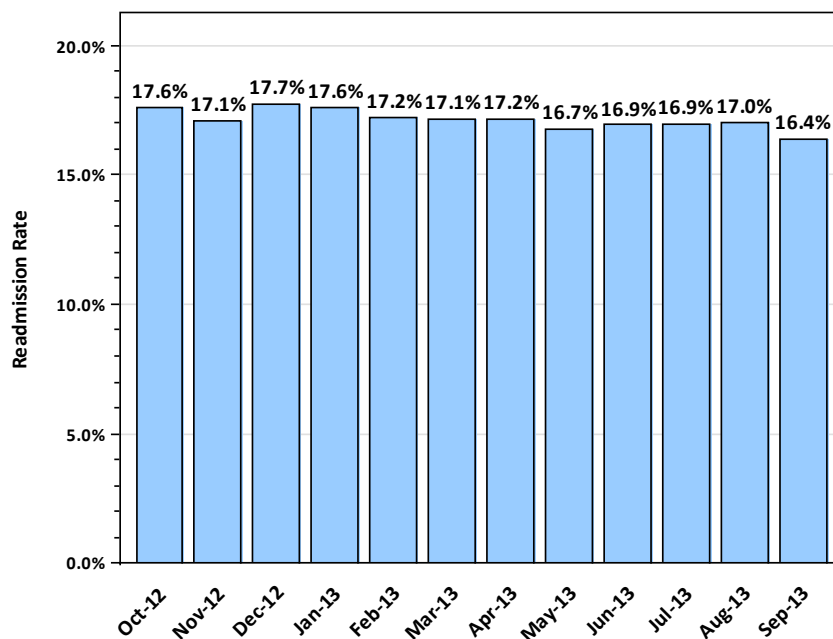


Table 10 depicts the all-cause 30-day readmission rates for patients discharged to a SNF for Q4 2012 through Q3 2013 for the state of California.

Table 10: All-Cause 30-Day Readmission Rates by Quarter for Patients Discharged to SNF— October 1, 2012–September 30, 2013								
Setting Discharged To	Quarter	Number of Discharges	Number of Discharges Readmitted within 30 Days	30-Day Readmit Rate	Number of 30-Day Readmits to the same hospital	Percentage of 30-Day Readmits to the same hospital	Number of 30-Day Readmits to another hospital	Percentage of 30-Day Readmits to another hospital
SNF	Q4 2012	42,467	9,138	21.5%	6,645	72.7%	2,493	27.3%
	Q1 2013	46,694	10,167	21.8%	7,320	72.0%	2,847	28.0%
	Q2 2013	41,261	8,481	20.6%	6,144	72.4%	2,337	27.6%
	Q3 2013	40,974	8,207	20.0%	6,007	73.2%	2,200	26.8%
	All	171,396	35,993	21.0%	26,116	72.6%	9,877	27.4%

Figure 4 displays the all-cause 30-day readmission rates for patients discharged to a SNF for Q4 2012 through Q3 2013 for the state of California. The readmission rate for each quarter is displayed above the bar.

Figure 4: Readmission Rate by Quarter for Patients Discharged to a SNF

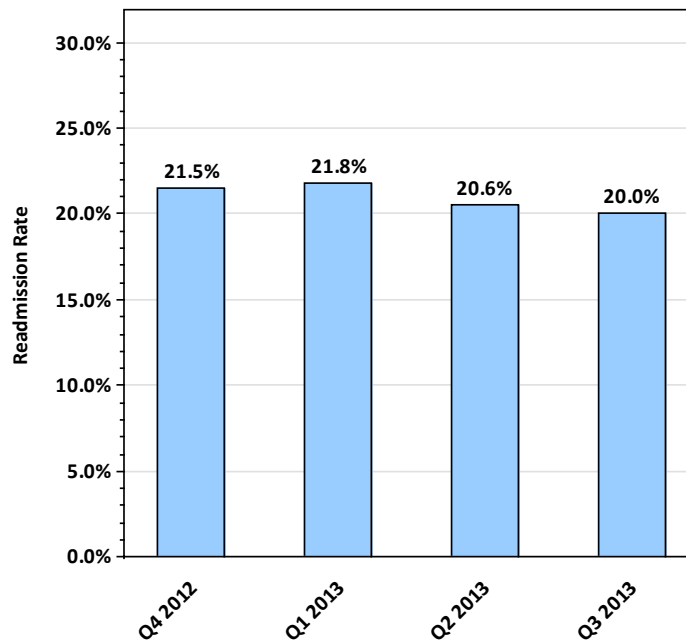


Table 11 depicts the all-cause 30-day readmission rates for patients discharged to a SNF for each month in Q4 2012 through Q3 2013 for the state of California.

Table 11: All-Cause 30-Day Readmission Rates by Month for Patients Discharged to SNF— October 1, 2012–September 30, 2013								
Setting Discharged To	Month	Number of Discharges	Number of Discharges Readmitted within 30 Days	30-Day Readmit Rate	Number of 30-Day Readmits to the same hospital	Percentage of 30-Day Readmits to the same hospital	Number of 30-Day Readmits to another hospital	Percentage of 30-Day Readmits to another hospital
SNF	October 2012	14,457	3,120	21.6%	2,276	72.9%	844	27.1%
	November 2012	13,905	2,985	21.5%	2,162	72.4%	823	27.6%
	December 2012	14,105	3,033	21.5%	2,207	72.8%	826	27.2%
	January 2013	16,295	3,712	22.8%	2,654	71.5%	1,058	28.5%
	February 2013	15,071	3,260	21.6%	2,328	71.4%	932	28.6%
	March 2013	15,328	3,195	20.8%	2,338	73.2%	857	26.8%
	April 2013	13,969	2,909	20.8%	2,049	70.4%	860	29.6%
	May 2013	14,077	2,872	20.4%	2,101	73.2%	771	26.8%
	June 2013	13,215	2,700	20.4%	1,994	73.9%	706	26.1%
	July 2013	13,944	2,841	20.4%	2,084	73.4%	757	26.6%
	August 2013	13,953	2,831	20.3%	2,037	72.0%	794	28.0%
	September 2013	13,077	2,535	19.4%	1,886	74.4%	649	25.6%
All		171,396	35,993	21.0%	26,116	72.6%	9,877	27.4%

Figure 5 displays the all-cause 30-day readmission rates for patients discharged to a SNF for each month in Q4 2012 through Q3 2013 for the state of California. The readmission rate for each month is displayed above the bar.

Figure 5: Readmission Rate by Month for Patients Discharged to a SNF

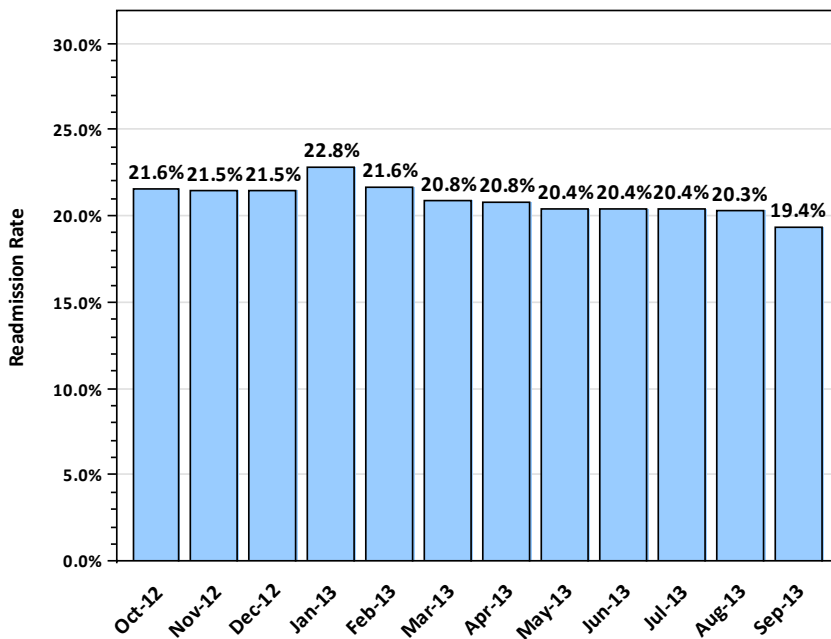


Table 12 depicts the all-cause 30-day readmission rates for patients discharged to a HHA for Q4 2012 through Q3 2013 for the state of California.

Table 12: All-Cause 30-Day Readmission Rates by Quarter for Patients Discharged to HHA— October 1, 2012–September 30, 2013								
Setting Discharged To	Quarter	Number of Discharges	Number of Discharges Readmitted within 30 Days	30-Day Readmit Rate	Number of 30-Day Readmits to the same hospital	Percentage of 30-Day Readmits to the same hospital	Number of 30-Day Readmits to another hospital	Percentage of 30-Day Readmits to another hospital
HHA	Q4 2012	30,942	6,154	19.9%	4,813	78.2%	1,341	21.8%
	Q1 2013	33,514	6,469	19.3%	5,011	77.5%	1,458	22.5%
	Q2 2013	30,456	5,822	19.1%	4,631	79.5%	1,191	20.5%
	Q3 2013	30,327	6,013	19.8%	4,746	78.9%	1,267	21.1%
	All	125,239	24,458	19.5%	19,201	78.5%	5,257	21.5%

Figure 6 displays the all-cause 30-day readmission rates for patients discharged to a HHA for Q4 2012 through Q3 2013 for the state of California. The readmission rate for each quarter is displayed above the bar.

Figure 6: Readmission Rate by Quarter for Patients Discharged to a HHA

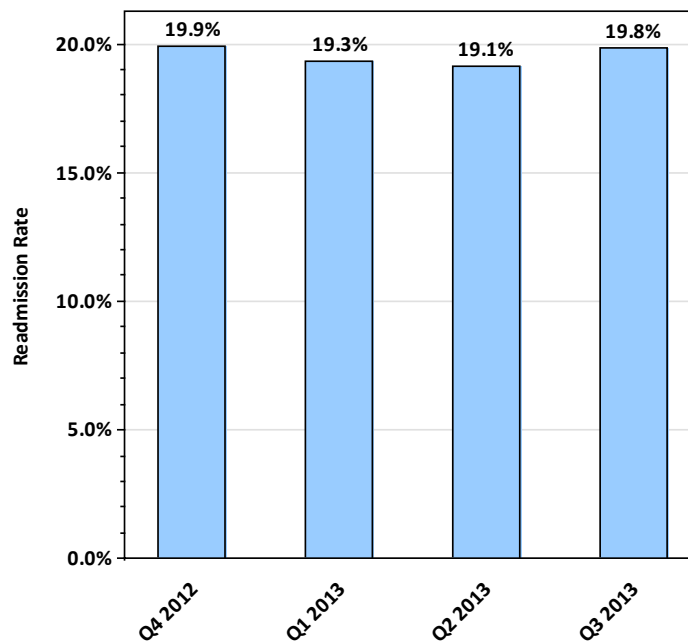


Table 13 depicts the all-cause 30-day readmission rates for patients discharged to a HHA for each month in Q4 2012 through Q3 2013 for the state of California.

Table 13: All-Cause 30-Day Readmission Rates by Month for Patients Discharged to HHA— October 1, 2012–September 30, 2013								
Setting Discharged To	Month	Number of Discharges	Number of Discharges Readmitted within 30 Days	30-Day Readmit Rate	Number of 30-Day Readmits to the same hospital	Percentage of 30-Day Readmits to the same hospital	Number of 30-Day Readmits to another hospital	Percentage of 30-Day Readmits to another hospital
HHA	October 2012	10,486	2,035	19.4%	1,578	77.5%	457	22.5%
	November 2012	10,110	1,998	19.8%	1,567	78.4%	431	21.6%
	December 2012	10,346	2,121	20.5%	1,668	78.6%	453	21.4%
	January 2013	11,759	2,296	19.5%	1,807	78.7%	489	21.3%
	February 2013	10,857	2,114	19.5%	1,626	76.9%	488	23.1%
	March 2013	10,898	2,059	18.9%	1,578	76.6%	481	23.4%
	April 2013	10,339	1,900	18.4%	1,528	80.4%	372	19.6%
	May 2013	10,385	2,031	19.6%	1,622	79.9%	409	20.1%
	June 2013	9,732	1,891	19.4%	1,481	78.3%	410	21.7%
	July 2013	10,172	2,023	19.9%	1,598	79.0%	425	21.0%
	August 2013	10,454	2,121	20.3%	1,671	78.8%	450	21.2%
	September 2013	9,701	1,869	19.3%	1,477	79.0%	392	21.0%
	All		125,239	24,458	19.5%	19,201	78.5%	5,257

Figure 7 displays the all-cause 30-day readmission rates for patients discharged to a HHA for each month in Q4 2012 through Q3 2013 for the state of California. The readmission rate for each month is displayed above the bar.

Figure 7: Readmission Rate by Month for Patients Discharged to a HHA

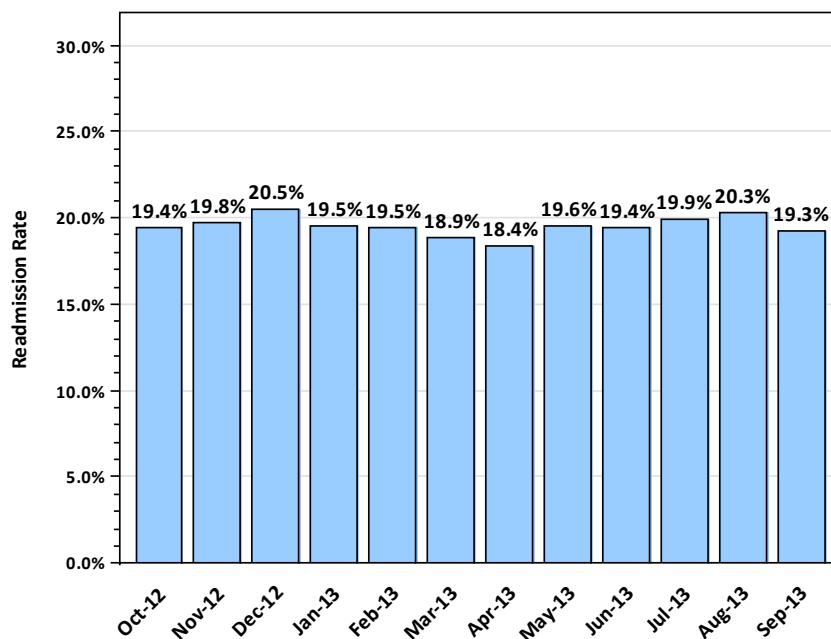


Table 14 depicts the all-cause 30-day readmission rates for patients discharged to all settings for Q4 2012 through Q3 2013 for the state of California.

Table 14: All-Cause 30-Day Readmission Rates by Quarter for Patients Discharged to All Settings— October 1, 2012–September 30, 2013								
Setting Discharged To	Quarter	Number of Discharges	Number of Discharges Readmitted within 30 Days	30-Day Readmit Rate	Number of 30-Day Readmits to the same hospital	Percentage of 30-Day Readmits to the same hospital	Number of 30-Day Readmits to another hospital	Percentage of 30-Day Readmits to another hospital
All Settings	Q4 2012	184,657	34,562	18.7%	25,229	73.0%	9,333	27.0%
	Q1 2013	197,349	36,664	18.6%	26,422	72.1%	10,242	27.9%
	Q2 2013	179,271	32,523	18.1%	23,570	72.5%	8,953	27.5%
	Q3 2013	174,403	31,383	18.0%	22,917	73.0%	8,466	27.0%
	All	735,680	135,132	18.4%	98,138	72.6%	36,994	27.4%

Figure 8 displays the all-cause 30-day readmission rates for patients discharged to all settings for Q4 2012 through Q3 2013 for the state of California. The readmission rate for each quarter is displayed above the bar.

Figure 8: Readmission Rate by Quarter for Patients Discharged to All Settings

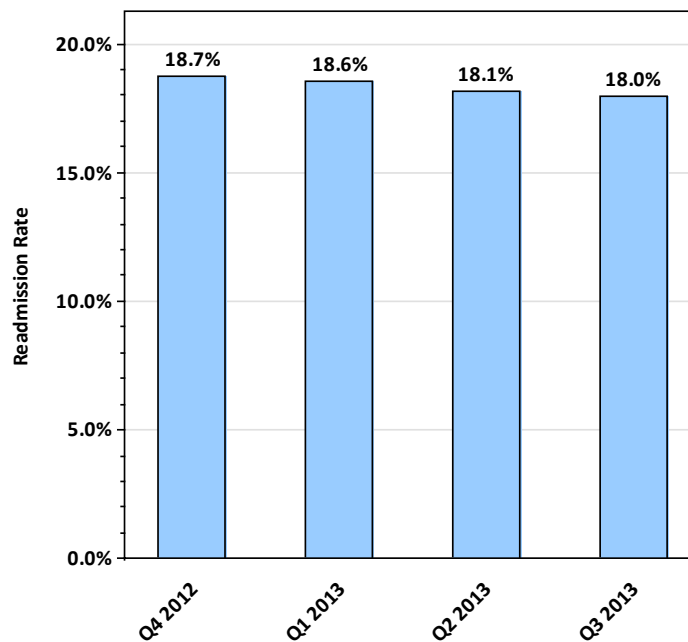


Table 15 depicts the all-cause 30-day readmission rates for patients discharged to all settings for each month in Q4 2012 through Q3 2013 for the state of California.

Table 15: All-Cause 30-Day Readmission Rates by Month for Patients Discharged to All Settings— October 1, 2012–September 30, 2013								
Setting Discharged To	Month	Number of Discharges	Number of Discharges Readmitted within 30 Days	30-Day Readmit Rate	Number of 30-Day Readmits to the same hospital	Percentage of 30-Day Readmits to the same hospital	Number of 30-Day Readmits to another hospital	Percentage of 30-Day Readmits to another hospital
All Settings	October 2012	62,374	11,666	18.7%	8,515	73.0%	3,151	27.0%
	November 2012	60,517	11,233	18.6%	8,200	73.0%	3,033	27.0%
	December 2012	61,766	11,663	18.9%	8,514	73.0%	3,149	27.0%
	January 2013	68,943	13,077	19.0%	9,380	71.7%	3,697	28.3%
	February 2013	63,108	11,702	18.5%	8,399	71.8%	3,303	28.2%
	March 2013	65,298	11,885	18.2%	8,643	72.7%	3,242	27.3%
	April 2013	60,509	11,037	18.2%	7,972	72.2%	3,065	27.8%
	May 2013	61,127	11,033	18.0%	8,015	72.6%	3,018	27.4%
	June 2013	57,635	10,453	18.1%	7,583	72.5%	2,870	27.5%
	July 2013	59,153	10,749	18.2%	7,861	73.1%	2,888	26.9%
	August 2013	59,709	10,891	18.2%	7,921	72.7%	2,970	27.3%
	September 2013	55,541	9,743	17.5%	7,135	73.2%	2,608	26.8%
	All		735,680	135,132	18.4%	98,138	72.6%	36,994

Figure 9 displays the all-cause 30-day readmission rates for patients discharged to all settings for each month in Q4 2012 through Q3 2013 for the state of California. The readmission rate for each month is displayed above the bar.

Figure 9: Readmission Rate by Month for Patients Discharged to All Settings

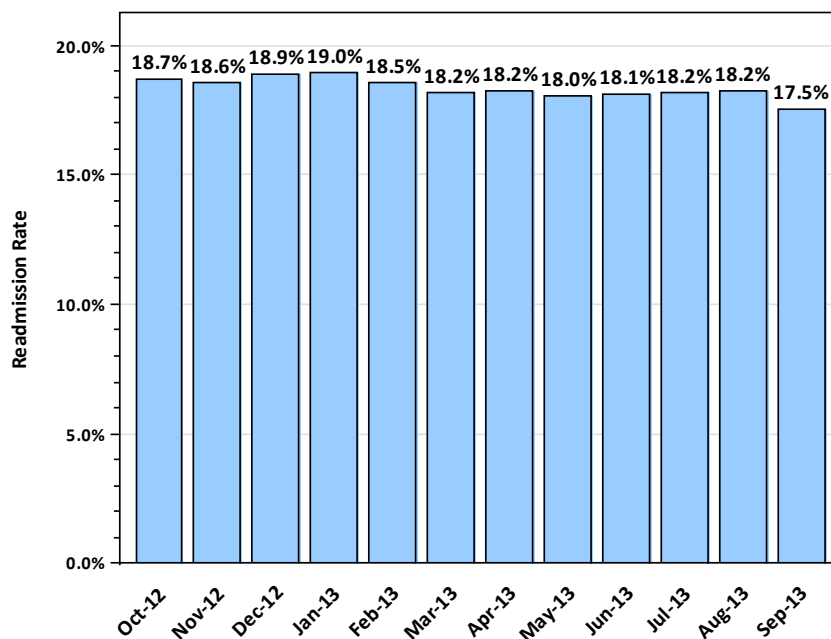
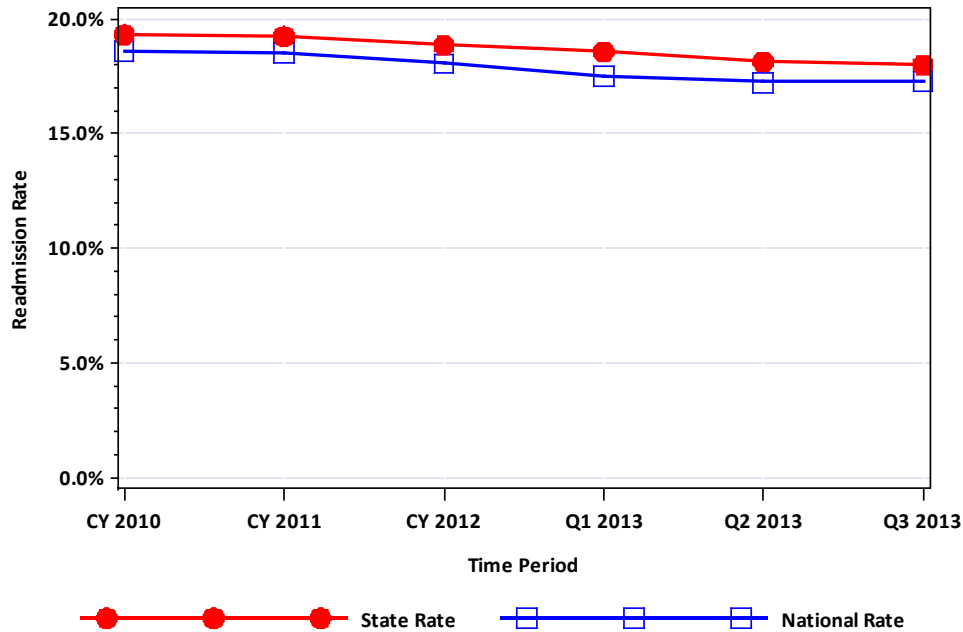


Figure 10 displays the all-cause 30-day readmission rates for the state of California and the nation for CY 2010 (i.e., baseline period), CY 2011, CY 2012, Q1 2013, Q2 2013, and Q3 2013.

Figure 10: All-Cause 30-Day Readmission Rates



All-Cause 30-Day Mortality Rates

Table 16 depicts the all-cause 30-day mortality rates from admission for Q4 2012 through Q3 2013 for the state of California.⁵

Table 16: All-Cause 30-Day Mortality Rates	
Quarter	Statewide
Q4 2012	4.2%
Q1 2013	4.6%
Q2 2013	4.0%
Q3 2013	4.0%

⁵ The 30-day mortality rates are not risk adjusted.

AMI Readmission Rates

Table 17 depicts the discharge setting after inpatient hospitalization for AMI and 30-day readmission rates by discharge setting for Q4 2012 through Q3 2013 for the state of California.

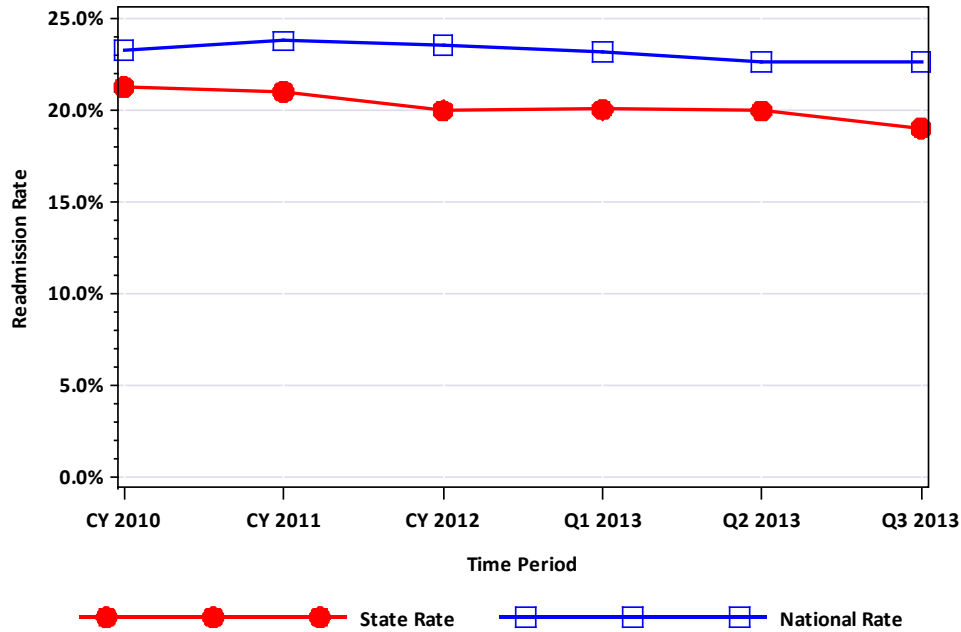
Group	Setting Discharged To	Number of Discharges	Number of Discharges Readmitted within 30 Days	30-Day Readmit Rate	Number of 30-Day Readmits to the same hospital	Percentage of 30-Day Readmits to the same hospital	Number of 30-Day Readmits to another hospital	Percentage of 30-Day Readmits to another hospital
California	Home	8,874	1,456	16.4%	1,021	70.1%	435	29.9%
	SNF	2,452	677	27.6%	482	71.2%	195	28.8%
	HHA	2,331	539	23.1%	403	74.8%	136	25.2%
	Hospice	377	14	3.7%	10	71.4%	4	28.6%
	Other	1,084	282	26.0%	157	55.7%	125	44.3%
	All		15,118	2,968	19.6%	2,073	69.8%	895

Table 18 depicts the number of days from discharge to readmission by discharge setting for AMI for the state of California.

Group	Setting Discharged To	Number of Readmissions	1–3 Days		4–7 Days		8–14 Days		15–21 Days		22–30 Days	
			N	%	N	%	N	%	N	%	N	%
California	Home	1,456	314	21.6%	312	21.4%	344	23.6%	232	15.9%	254	17.4%
	SNF	677	130	19.2%	152	22.5%	167	24.7%	105	15.5%	123	18.2%
	HHA	539	105	19.5%	116	21.5%	139	25.8%	82	15.2%	97	18.0%
	Hospice	14	3	21.4%	0	0.0%	8	57.1%	2	14.3%	1	7.1%
	Other	282	89	31.6%	42	14.9%	48	17.0%	50	17.7%	53	18.8%
	All		2,968	641	21.6%	622	21.0%	706	23.8%	471	15.9%	528

Figure 11 displays the AMI 30-day readmission rates for the state of California and the nation for CY 2010 (i.e., baseline period), CY 2011, CY 2012, Q1 2013, Q2 2013, and Q3 2013.

Figure 11: AMI 30-Day Readmission Rates



AMI 30-Day Mortality Rates

Table 19 depicts the AMI 30-day mortality rates from admission for Q4 2012 through Q3 2013 for the state of California.⁶

Quarter	Statewide
Q4 2012	5.4%
Q1 2013	6.0%
Q2 2013	4.8%
Q3 2013	5.2%

⁶ The 30-day mortality rates are not risk adjusted.

HF Readmission Rates

Table 20 depicts the discharge setting after inpatient hospitalization for HF and 30-day readmission rates by discharge setting for Q4 2012 through Q3 2013 for the state of California.

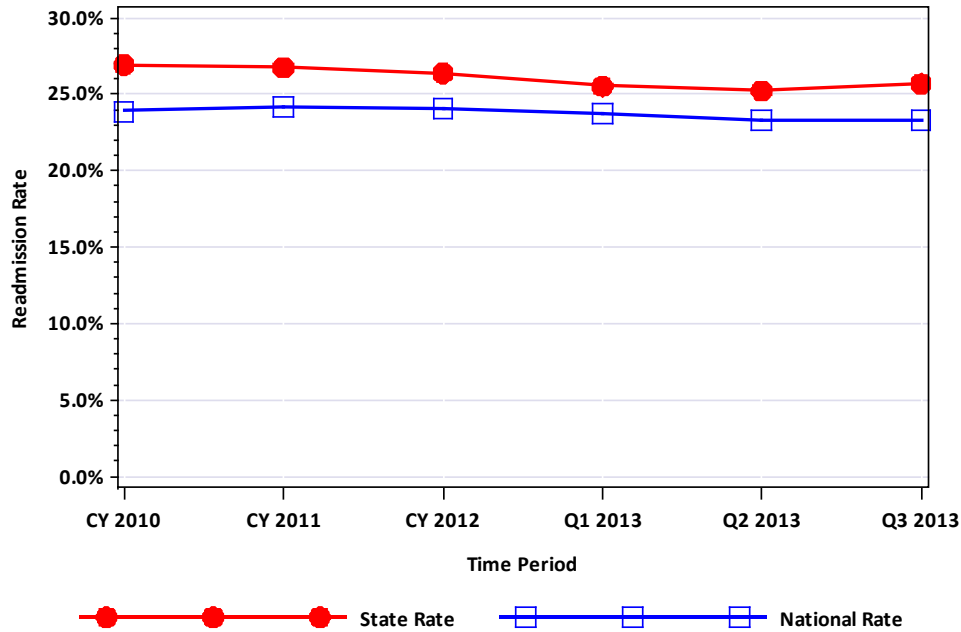
Group	Setting Discharged To	Number of Discharges	Number of Discharges Readmitted within 30 Days	30-Day Readmit Rate	Number of 30-Day Readmits to the same hospital	Percentage of 30-Day Readmits to the same hospital	Number of 30-Day Readmits to another hospital	Percentage of 30-Day Readmits to another hospital
California	Home	17,965	4,448	24.8%	3,306	74.3%	1,142	25.7%
	SNF	6,798	1,900	27.9%	1,430	75.3%	470	24.7%
	HHA	7,678	2,088	27.2%	1,666	79.8%	422	20.2%
	Hospice	1,048	42	4.0%	34	81.0%	8	19.0%
	Other	1,849	597	32.3%	347	58.1%	250	41.9%
	All	35,338	9,075	25.7%	6,783	74.7%	2,292	25.3%

Table 21 depicts the number of days from discharge to readmission by discharge setting for HF for the state of California.

Group	Setting Discharged To	Number of Readmissions	1–3 Days		4–7 Days		8–14 Days		15–21 Days		22–30 Days	
			N	%	N	%	N	%	N	%	N	%
California	Home	4,448	609	13.7%	787	17.7%	1,161	26.1%	959	21.6%	932	21.0%
	SNF	1,900	236	12.4%	327	17.2%	517	27.2%	395	20.8%	425	22.4%
	HHA	2,088	297	14.2%	397	19.0%	528	25.3%	437	20.9%	429	20.5%
	Hospice	42	7	16.7%	11	26.2%	9	21.4%	6	14.3%	9	21.4%
	Other	597	118	19.8%	103	17.3%	127	21.3%	109	18.3%	140	23.5%
	All	9,075	1,267	14.0%	1,625	17.9%	2,342	25.8%	1,906	21.0%	1,935	21.3%

Figure 12 displays the HF 30-day readmission rates for the state of California and the nation for CY 2010 (i.e., baseline period), CY 2011, CY 2012, Q1 2013, Q2 2013, and Q3 2013.

Figure 12: HF 30-Day Readmission Rates



HF 30-Day Mortality Rates

Table 22 depicts the HF 30-day mortality rates from admission for Q4 2012 through Q3 2013 for the state of California.⁷

Quarter	Statewide
Q4 2012	6.2%
Q1 2013	7.3%
Q2 2013	6.1%
Q3 2013	6.4%

⁷ The 30-day mortality rates are not risk adjusted.

PNE Readmission Rates

Table 23 depicts the PNE 30-day readmission rates by discharge setting for Q4 2012 through Q3 2013 for the state of California.

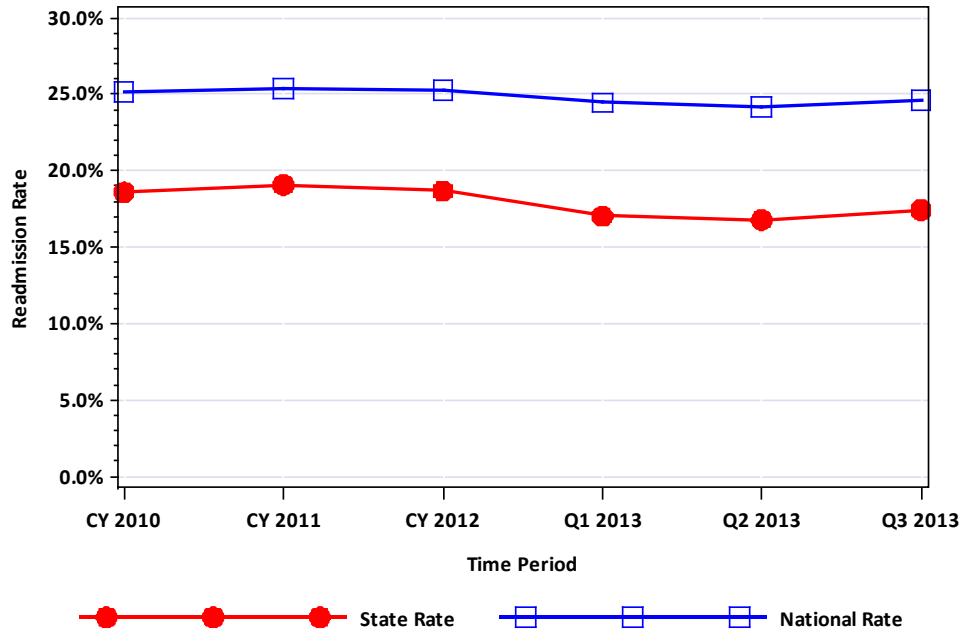
Group	Setting Discharged To	Number of Discharges	Number of Discharges Readmitted within 30 Days	30-Day Readmit Rate	Number of 30-Day Readmits to the same hospital	Percentage of 30-Day Readmits to the same hospital	Number of 30-Day Readmits to another hospital	Percentage of 30-Day Readmits to another hospital
California	Home	13,672	2,106	15.4%	1,613	76.6%	493	23.4%
	SNF	7,106	1,549	21.8%	1,117	72.1%	432	27.9%
	HHA	5,009	1,008	20.1%	827	82.0%	181	18.0%
	Hospice	708	11	1.6%	10	90.9%	1	9.1%
	Other	1,906	356	18.7%	242	68.0%	114	32.0%
	All		28,401	5,030	17.7%	3,809	75.7%	1,221

Table 24 depicts the number of days from discharge to readmission by discharge setting for PNE for the state of California.

Group	Setting Discharged To	Number of Readmissions	1–3 Days		4–7 Days		8–14 Days		15–21 Days		22–30 Days	
			N	%	N	%	N	%	N	%	N	%
California	Home	2,106	356	16.9%	346	16.4%	566	26.9%	398	18.9%	440	20.9%
	SNF	1,549	225	14.5%	275	17.8%	370	23.9%	356	23.0%	323	20.9%
	HHA	1,008	169	16.8%	195	19.3%	265	26.3%	185	18.4%	194	19.2%
	Hospice	11	3	27.3%	2	18.2%	2	18.2%	1	9.1%	3	27.3%
	Other	356	70	19.7%	46	12.9%	74	20.8%	71	19.9%	95	26.7%
	All		5,030	823	16.4%	864	17.2%	1,277	25.4%	1,011	20.1%	1,055

Figure 13 displays the PNE 30-day readmission rates for the state of California and the nation for CY 2010 (i.e., baseline period), CY 2011, CY 2012, Q1 2013, Q2 2013, and Q3 2013.

Figure 13: PNE 30-Day Readmission Rates



PNE 30-Day Mortality Rates

Table 25 depicts the PNE 30-day mortality rates from admission for Q4 2012 through Q3 2013 for the state of California.⁸

Quarter	Statewide
Q4 2012	7.0%
Q1 2013	6.3%
Q2 2013	5.5%
Q3 2013	7.0%

⁸ The 30-day mortality rates are not risk adjusted.

COPD Readmission Rates

Table 26 depicts the state of California's COPD 30-day readmission rates by discharge setting for Q4 2012 through Q3 2013.

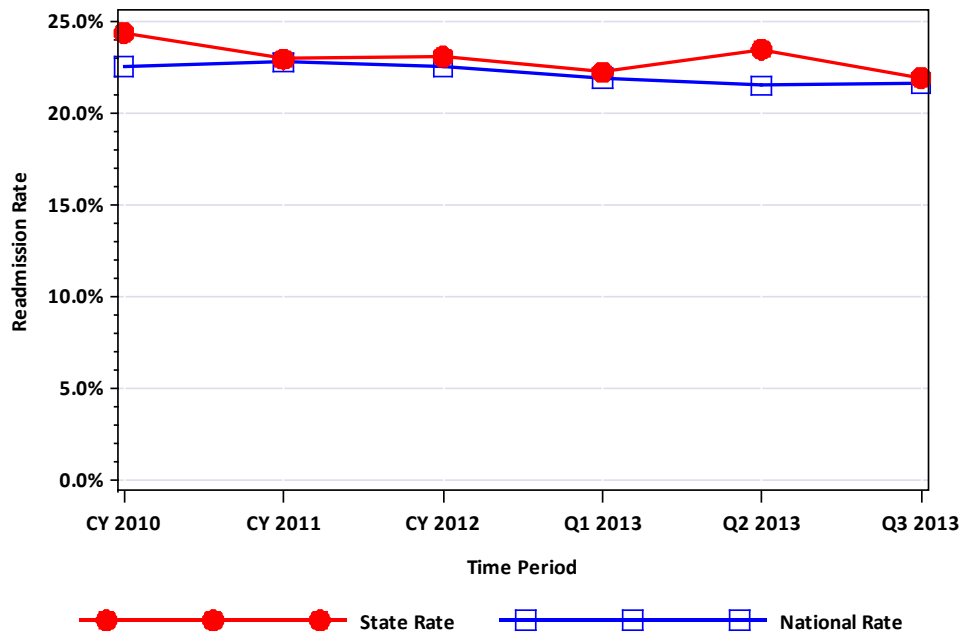
Table 26: COPD 30-Day Readmission Rates—October 1, 2012–September 30, 2013								
Group	Setting Discharged To	Number of Discharges	Number of Discharges Readmitted within 30 Days	30-Day Readmit Rate	Number of 30-Day Readmits to the same hospital	Percentage of 30-Day Readmits to the same hospital	Number of 30-Day Readmits to another hospital	Percentage of 30-Day Readmits to another hospital
California	Home	10,504	2,297	21.9%	1,792	78.0%	505	22.0%
	SNF	3,399	847	24.9%	611	72.1%	236	27.9%
	HHA	3,138	740	23.6%	596	80.5%	144	19.5%
	Hospice	266	10	3.8%	7	70.0%	3	30.0%
	Other	1,112	290	26.1%	202	69.7%	88	30.3%
	All		18,419	4,184	22.7%	3,208	76.7%	976

Table 27 depicts the number of days from discharge to readmission by discharge setting for COPD for the state of California.

Table 27: Number of Days from COPD Discharge to Readmission—October 1, 2012–September 30, 2013												
Group	Setting Discharged To	Number of Readmissions	1–3 Days		4–7 Days		8–14 Days		15–21 Days		22–30 Days	
			N	%	N	%	N	%	N	%	N	%
California	Home	2,297	371	16.2%	371	16.2%	553	24.1%	501	21.8%	501	21.8%
	SNF	847	106	12.5%	152	17.9%	212	25.0%	183	21.6%	194	22.9%
	HHA	740	103	13.9%	122	16.5%	206	27.8%	159	21.5%	150	20.3%
	Hospice	10	1	10.0%	3	30.0%	3	30.0%	2	20.0%	1	10.0%
	Other	290	57	19.7%	45	15.5%	70	24.1%	57	19.7%	61	21.0%
	All		4,184	638	15.2%	693	16.6%	1,044	25.0%	902	21.6%	907

Figure 14 displays the COPD 30-day readmission rates for the state of California and the nation for CY 2010 (i.e., baseline period), CY 2011, CY 2012, Q1 2013, Q2 2013, and Q3 2013.

Figure 14: COPD 30-Day Readmission Rates



COPD 30-Day Mortality Rates

Table 28 depicts the COPD 30-day mortality rates from admission for Q4 2012 through Q3 2013 for the state of California.⁹

Quarter	Statewide
Q4 2012	4.4%
Q1 2013	4.6%
Q2 2013	4.0%
Q3 2013	3.5%

⁹ The 30-day mortality rates are not risk adjusted.

THA/TKA Readmission Rates

Table 29 depicts the THA/TKA 30-day readmission rates by discharge setting for Q4 2012 through Q3 2013 for the state of California.

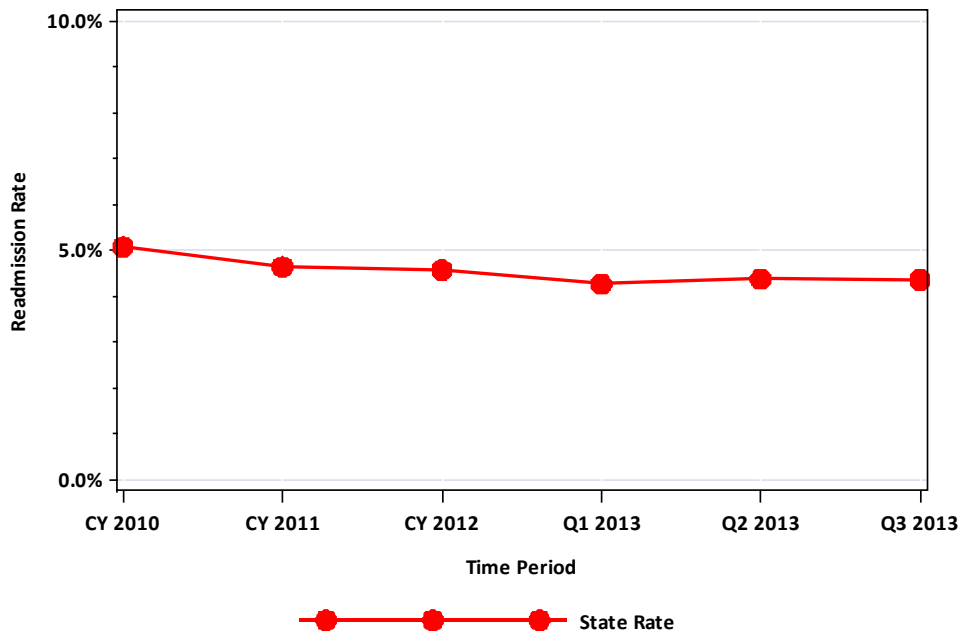
Table 29: THA/TKA 30-Day Readmission Rates—October 1, 2012–September 30, 2013								
Group	Setting Discharged To	Number of Discharges	Number of Discharges Readmitted within 30 Days	30-Day Readmit Rate	Number of 30-Day Readmits to the same hospital	Percentage of 30-Day Readmits to the same hospital	Number of 30-Day Readmits to another hospital	Percentage of 30-Day Readmits to another hospital
California	Home	5,730	174	3.0%	122	70.1%	52	29.9%
	SNF	8,796	529	6.0%	391	73.9%	138	26.1%
	HHA	13,075	442	3.4%	304	68.8%	138	31.2%
	Hospice	6	0	0.0%	0	0.0%	0	0.0%
	Other	1,794	126	7.0%	87	69.0%	39	31.0%
	All		29,401	1,271	4.3%	904	71.1%	367

Table 30 depicts the number of days from discharge to readmission by discharge setting for THA/TKA for the state of California.

Table 30: Number of Days from THA/TKA Discharge to Readmission—October 1, 2012–September 30, 2013												
Group	Setting Discharged To	Number of Readmissions	1–3 Days		4–7 Days		8–14 Days		15–21 Days		22–30 Days	
			N	%	N	%	N	%	N	%	N	%
California	Home	174	55	31.6%	21	12.1%	46	26.4%	27	15.5%	25	14.4%
	SNF	529	87	16.4%	99	18.7%	132	25.0%	105	19.8%	106	20.0%
	HHA	442	96	21.7%	104	23.5%	108	24.4%	75	17.0%	59	13.3%
	Hospice	0	0	0.0%	0	0.0%	0	0.0%	0	0.0%	0	0.0%
	Other	126	26	20.6%	20	15.9%	30	23.8%	26	20.6%	24	19.0%
	All		1,271	264	20.8%	244	19.2%	316	24.9%	233	18.3%	214

Figure 15 displays the THA/TKA 30-day readmission rates for the state of California for CY 2010 (i.e., baseline period), CY 2011, CY 2012, Q1 2013, Q2 2013, and Q3 2013.

Figure 15: THA/TKA 30-Day Readmission Rates



THA/TKA 30-Day Mortality Rates

Table 31 depicts the THA/TKA 30-day mortality rates from admission for Q4 2012 through Q3 2013 for the state of California.¹⁰

Table 31: THA/TKA 30-Day Mortality Rates— October 1, 2012–September 30, 2013	
Quarter	Statewide
Q4 2012	0.1%
Q1 2013	0.1%
Q2 2013	0.1%
Q3 2013	0.1%

¹⁰ The 30-day mortality rates are not risk adjusted.

Emergency Department (ED) Visits and Observation Stays

Table 32 depicts the number of ED visits for Q4 2012 through Q3 2013 for the state of California.¹¹

Table 32: Number of ED Visits— October 1, 2012–September 30, 2013	
Quarter	Statewide
Q4 2012	266,689
Q1 2013	271,888
Q2 2013	262,772
Q3 2013	265,963

Table 33 depicts the number of observation stays for Q4 2012 through Q3 2013 for the state of California.¹²

Table 33: Number of Observation Stays— October 1, 2012–September 30, 2013	
Quarter	Statewide
Q4 2012	26,246
Q1 2013	25,783
Q2 2013	25,079
Q3 2013	24,413

¹¹ Note: ED visits resulting in an inpatient stay are not included in this number.

¹² Note: Observation stays resulting in an inpatient stay are not included in this number.

Appendix

Settings Included in the “Other” Category

The “Other” category in the tables throughout the report includes discharges to the following settings:

- ◆ Psychiatric hospital
- ◆ Long-term care hospital
- ◆ Rehabilitation facility
- ◆ Federal government-operated healthcare facility
- ◆ Intermediate care facility
- ◆ Short-term general hospital
- ◆ Critical access hospital
- ◆ Left against medical advice
- ◆ Other institutions

Diagnosis Code List for Disease-Specific Discharges

The following table lists the diagnosis codes used to identify the discharges for AMI, HF, PNE, and COPD.

Disease	Diagnosis Codes
AMI	410.00, 410.01, 410.10, 410.11, 410.20, 410.21, 410.30, 410.31, 410.40, 410.41, 410.50, 410.51, 410.60, 410.61, 410.70, 410.71, 410.80, 410.81, 410.90, 410.91
HF	402.01, 402.11, 402.91, 404.01, 404.03, 404.11, 404.13, 404.91, 404.93, 428
PNE	480.0, 480.1, 480.2, 480.3, 480.8, 480.9, 482.0, 482.1, 482.2, 482.9, 483.0, 483.1, 483.8, 487.0, 481, 485, 486, 482.30, 482.31, 482.32, 482.39, 482.40, 482.41, 482.49, 482.81, 482.82, 482.83, 482.84, 482.89
COPD	491, 492, 496

Procedural Code List for Disease-Specific Discharges

The following table lists the procedural codes used to identify the discharges for THA/TKA.

Procedure	Procedural Codes
THA/TKA	81.51, 81.54

This material was prepared by Health Services Advisory Group of California, Inc., the Medicare Quality Improvement Organization for California, under contract with the Centers for Medicare & Medicaid Services (CMS), an agency of the U.S. Department of Health and Human Services. The contents presented do not necessarily reflect CMS policy. Publication No. CA-10SOW-8.0-071714-02.